

Technical Specification - Salle Moreau-Evrard

LAYOUT

Overhead truss of height approx. 6m, layout and dimensions overleaf.

The absolute room is 14 m long x 9m wide, with an effective 2m length reduction from the rear with seating fully retracted.

With the seating extended, the remaining area is 7.5m by 9m. Up to 3 rows of additional seating can be added, each require a space of 1m.

Retractable seating structure contains 50 seats, and each additional row contains 8.

SOUND

2 x LD Systems Stinger 12 G3s 12" Mid/Tops suspended from truss.

1 x JBL JRX 218S 18" Subwoofer.

2 x EM Acoustics EMS 81X wedges.

1 x Bose L1 Compact

Soundcraft Ui24R Stage Box and Digital Mixer

Denon DN-312X 12 Channel Line Mixer QSC ISA 300Ti Amplifier

Yamaha EMX 2000 Powered Mixer Steinberg UR816C Interface

Mic list:

2 x Shure SM57

2 x Shure SM58

1x Shure Beta 58A

1 x AKG D330BT

2 x Shure BLX 14-Q25 Wireless LAV

VISION

2 x Chauvet Ovation E910-FC

5 x Chauvet COLORado 1-Quad Zoom

ETC Coloursource 20

DMX lines distributed across truss.

Benq W2000 projector suspended from truss, wireless input throughout room or wired from rear.

1 x ATEM Mini Pro

POWER

32A TP located in rear cupboard

16A located in rear cupboard 13A sockets located on truss and throughout the room

Wi-Fi is available throughout the venue.

The venue is on the first floor with level access from both George IV Bridge and West Parliament Square. Lift of depth 1.6m and width 1.45m to load in.

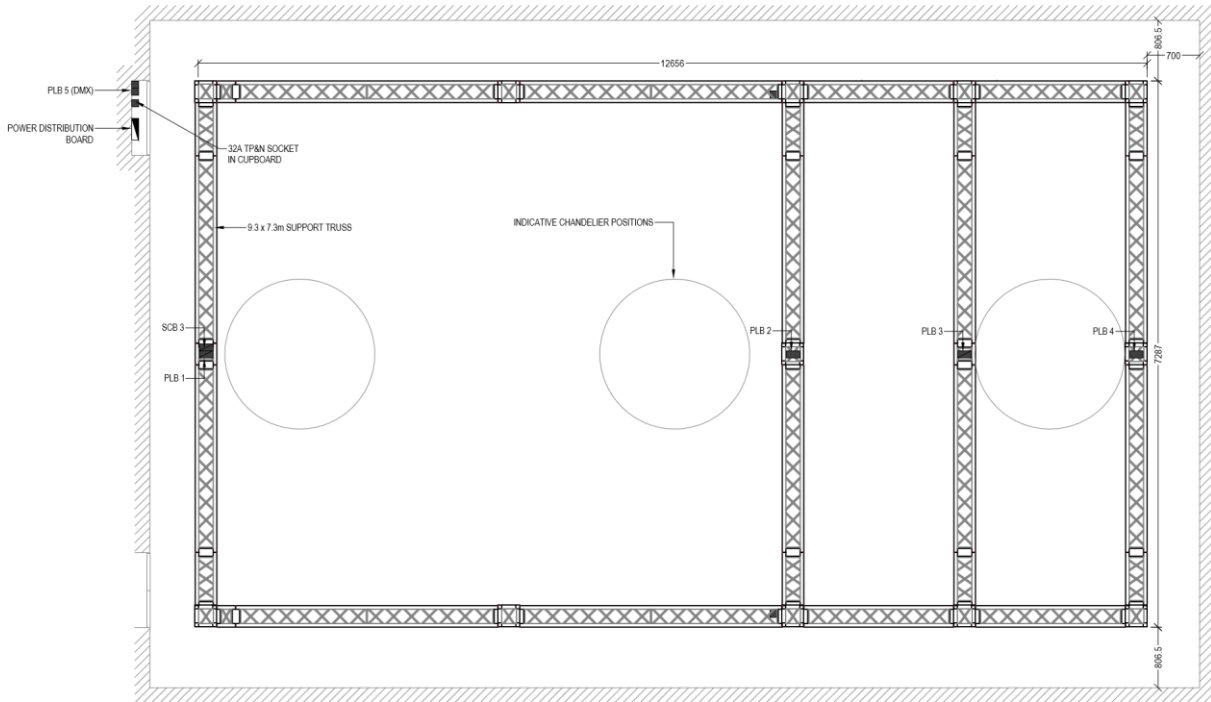
For any questions, please contact jamie.macpherson@diplomatie.gouv.fr

Last updated 25/01/23

Subject to change at any time.

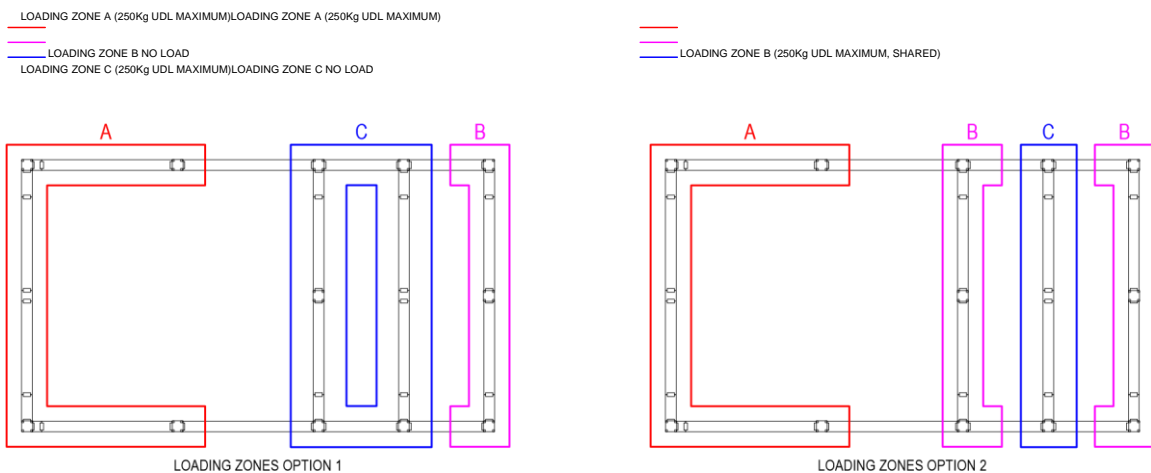
vivre
les
cultures





PLB1: DMX, PowerCon PLB2: DMX, PowerCon, 13a PLB3: DMX, PowerCon PLB4: DMX, Powercon Performance
 area to the RHS

PLEASE NOTE: LOADING ZONE RESTRICTIONS



Please be aware there is projection and audio equipment mounted, weighing approx. 30kg

For any questions, please contact jamie.macpherson@diplomatie.gouv.fr
 Last updated 25/01/23
 Subject to change at any time.